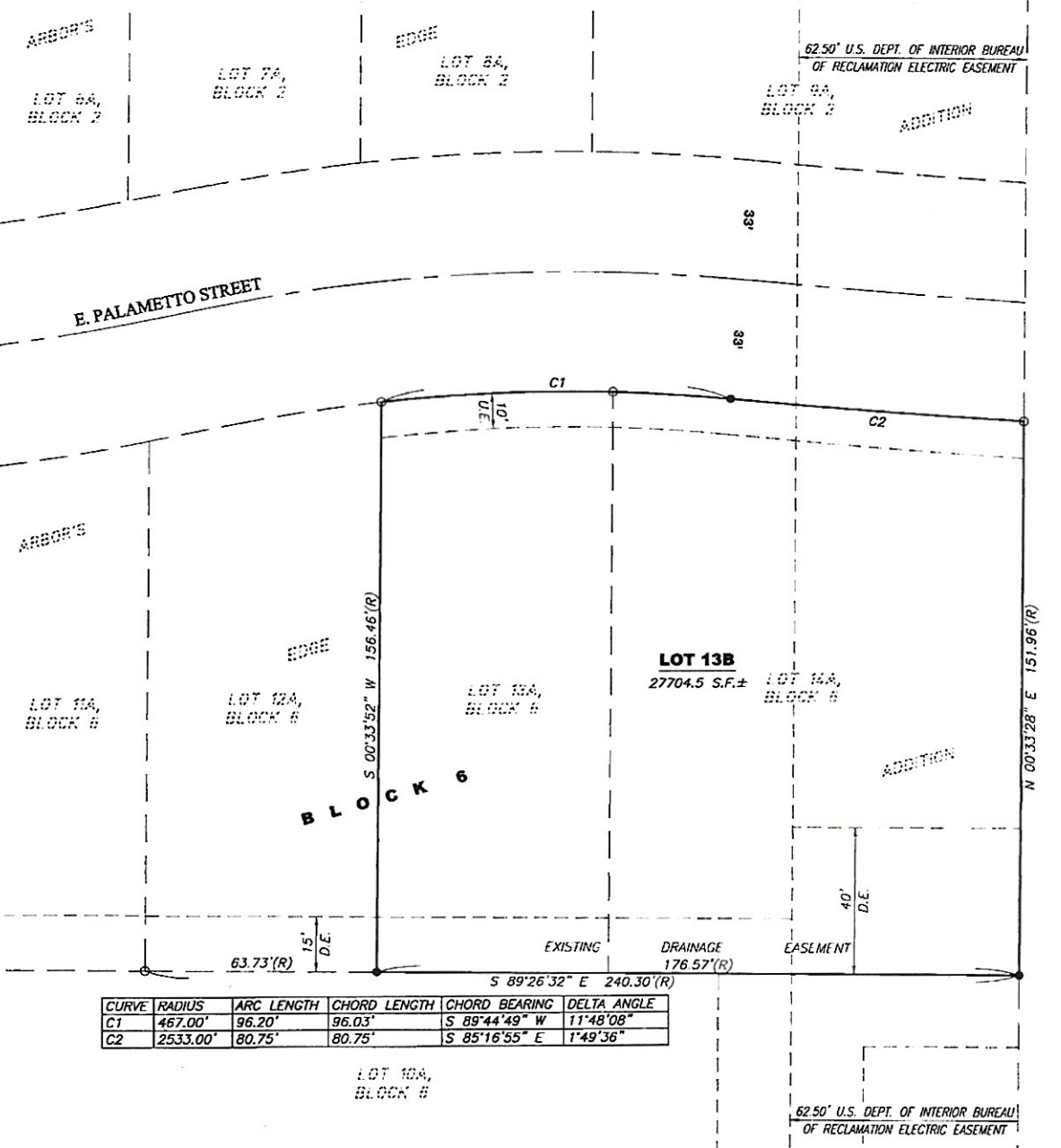


PLAT OF LOT 13B IN BLOCK 6 OF ARBOR'S EDGE ADDITION

TO THE CITY OF SIOUX FALLS, MINNEHAHA COUNTY, SOUTH DAKOTA



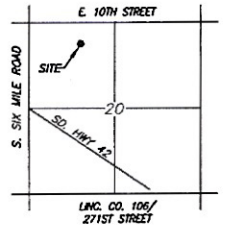
CURVE	RADIUS	ARC LENGTH	CHORD LENGTH	CHORD BEARING	DELTA ANGLE
C1	467.00'	96.20'	96.03'	S 89°44'49" W	11°48'08"
C2	2533.00'	80.75'	80.75'	S 85°16'55" E	1°49'36"

LEGEND

- SET 5/8" REBAR W/CAP #8145
- FD. MONUMENT (AS NOTED)
- (R) RECORD INFORMATION
- AC. ACRES
- S.F. SQUARE FEET
- U.E. UTILITY EASEMENT
- D.E. DRAINAGE EASEMENT
- N.T.S. NOT TO SCALE
- - - EASEMENT LINE
- - - PREVIOUSLY PLATTED LINE



SCALE: 1"=30'



AREA MAP N.T.S.
SECTION 20, T101N, R48W
5TH P.M.

NOTES:
BASIS OF BEARINGS IS ASSUMED.
THIS PLAT WAS PREPARED WITHOUT THE BENEFIT OF A TITLE COMMITMENT.
EASEMENTS OF RECORD WERE NOT RESEARCHED AND ARE NOT SHOWN ON THE PLAT.

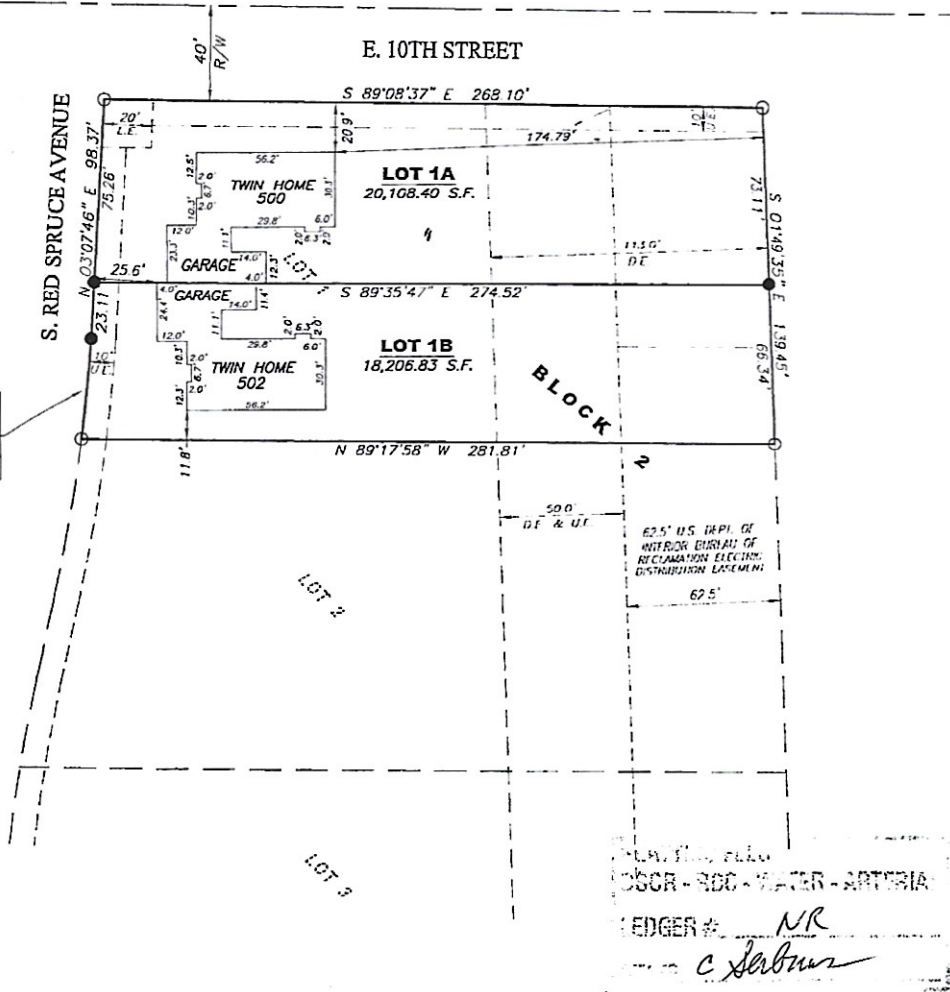
PREPARED BY:

Land Surveying and GPS Consulting
211 E. 14th Street Suite 100
Sioux Falls, South Dakota 57104
Phone: (605) 339-8901 FAX: (605) 274-8951

LOT 1A AND LOT 1B IN BLOCK 2 OF ARBOR'S EDGE

AN ADDITION TO THE CITY OF SIOUX FALLS, MINNEHAHA COUNTY, SOUTH DAKOTA,

A=41.91'
R=733.00'
Δ=3°16'33"
CH=41.90'
N 05°20'11" E

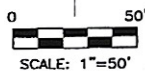


SURVEYOR'S NOTE:

THERE IS A 10' UTILITY EASEMENT ON EACH SIDE OF THE WATER AND SANITARY SEWER SERVICE LINES AS THE LINES EXIST IN THE FIELD. THIS EASEMENT IS FOR MAINTENANCE AND REPAIR OF THE UTILITY SERVICE LINES.

LEGEND

- SET 5/8" REBAR W/CAP #8145
- FD. MONUMENT
- (R) RECORD INFORMATION
- AC. ACRES
- S.F. SQUARE FEET
- P.U.A.E. PUBLIC UTILITY ACCESS EASEMENT
- U.E. UTILITY EASEMENT
- D.E. DRAINAGE EASEMENT
- D.U.E. DRAINAGE & UTILITY EASEMENT
- L.E. LANDSCAPE EASEMENT
- R/W RIGHT-OF-WAY
- N.T.S. NOT TO SCALE
- EASEMENT LINE
- PREVIOUSLY PLATTED LINE



AREA TABLE	
LOTS	0.88 ACRES
TOTAL	0.88 ACRES



NOTES:
THIS PLAT WAS PREPARED WITHOUT THE BENEFIT OF A TITLE COMMITMENT.

BASIS OF BEARINGS

PREPARED BY:
MIDWEST LAND SURVEYING, INC.
Land Surveying and GPS Consulting
211 E 14th Street, Suite 100, Sioux Falls, South Dakota 57104
Phone: (605) 339-8901 FAX: (605) 274-8951 1 OF 2